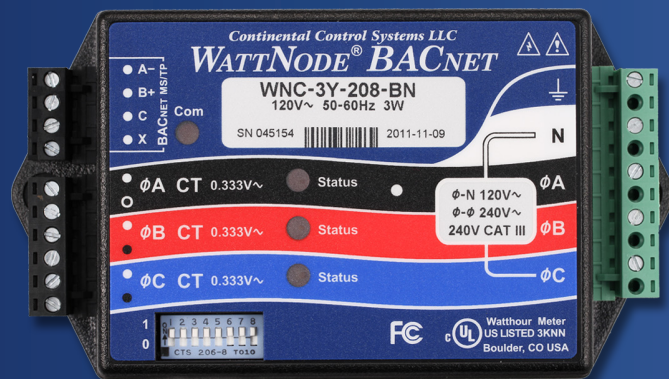


WATTNODE[®] for BACNET[®]



AC Power Measurements for BACnet Networks

The WattNode BACnet meter (MS/TP), is a cost-effective energy and power metering solution for building automation systems using the BACnet protocol.

The new BACnet WattNode meter complements the company's Modbus[®] and LonWorks[®] meters, enabling almost any building automation system seamless access to electrical measurements including power, energy, voltage, current, and power factor. Designed to be the most compact and cost-effective networkable energy meters on the market, all WattNode meters provide line-powered single and three phase, wye or delta configurations up to 600 Vac and 6000 amps.

Supporting full self-discovery of the meter and all of its objects, the WattNode BACnet meter offers more than 50 electric power-related measurements.

- Native BACnet MS/TP (RS-485)
- Selectable serial baud rates up to 76,800
- 50 electrical power measurements
- DIP switch selected addresses
- Safe, low voltage (0.333 Vac) current transformers
- Line powered
- Single or three phase, wye or delta configurations
- UL, cUL, CE
- Assembled in USA

Models	Nominal Vac Line-to-Neutral	Nominal Vac Line-to-Line	Phases	Wires
WNC-3Y-208-BN	120	208-240	3	4
WNC-3Y-400-BN	230	400	3	4
WNC-3Y-480-BN	277	480	3	4
WNC-3Y-600-BN	347	600	3	4
WNC-3D-240-BN	120	208-240	3	3-4
WNC-3D-400-BN	230	400	3	3-4
WNC-3D-480-BN	277	480	3	3-4